

# CLOTH SURGICAL FACE MASK PATTERN WITH TIES

## SUPPLIES:

100% Cotton fabric scraps (Need 1 light and 1 dark color fabric for visible contrast)

Sewing machine or serger

1 1/3yd or 48 inches Fabric or ribbon ties for head strap (bias tape, grosgrain ribbon NO satin ribbon!!)

3in wire (thinner gauge enough to bend and hold for nose piece. Can even use paperclips, twist ties or pipe cleaners! Make sure to bend ends in so the wire does not poke through fabric)



## DIRECTIONS:

**Step 1:** Cut (2) of pattern A fabric right sides together. Cut (2) of pattern B fabric right sides together.

**Step 2:** Fold Pattern A fabric 1/4 inches from end (as shown on pattern) top stitch down.

**Step 3:** Fold Pattern B fabric 1/2 inches from end (as shown on pattern) top stitch down.

**Step 4:** With Pattern A fabric right sides together, sew curved seam to create the center of mask with 1/4 inches seam allowance with a straight stitch. Clip curved seam to allow seam to lay flat.

**Step 5:** With Pattern B fabric right sides together, sew curved seam to create the center of the mask with 1/4in seam allowance. Clip curved seam to allow seam to lay flat.

**Step 6:** Match Pattern A and B at middle seam (nest seams) and stitch with 1/4 inch seam allowance both layers together at top and bottom (leaving ends open). Pattern A WILL BE LONGER THAN Pattern B!

**Step 7:** Before turning right sides out, zig-zag stitch pattern A and B edges together at the nose of the mask (2 inch down from top point on both sides, 4 inches total). (Fig 1)

**Step 8:** Slide wire between 1/4 inch seam allowance and zig-zagged edge at nose point, bend slightly around the curve.

**Step 9:** Turn mask right side out using the side openings.

**Step 10:** Fold Pattern A (folded edge) down to meet Pattern B folded edge, top stitch Pattern A 1/4 inch from fold to form a tube end for fabric or ribbon ties.

**Step 11: (Fig 2)** If making fabric ties, cut 1.5 inch strips of fabric, fold lengthwise in half press with iron, fold edges of fabric to meet at middle center fold, press with iron (as indicated in diagram). Stitch folded fabric closed in middle with a zig zag stitch. Strips should finish at .375in wide and 48inches long.

**Step 12:** Slide 48in piece of fabric/ribbon through tube opening on both ends of mask (pattern A side) leaving head strap at top and ties at bottom of mask (as indicated in diagram.)

FABRIC/RIBBON  
TIE DIAGRAM

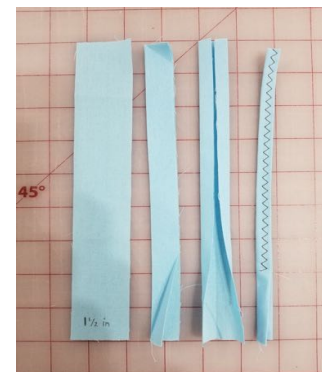
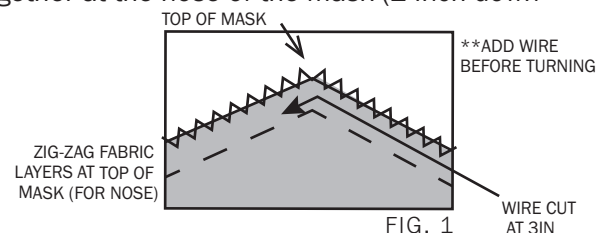
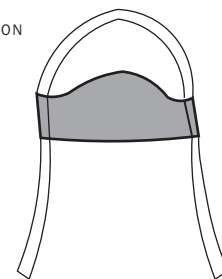
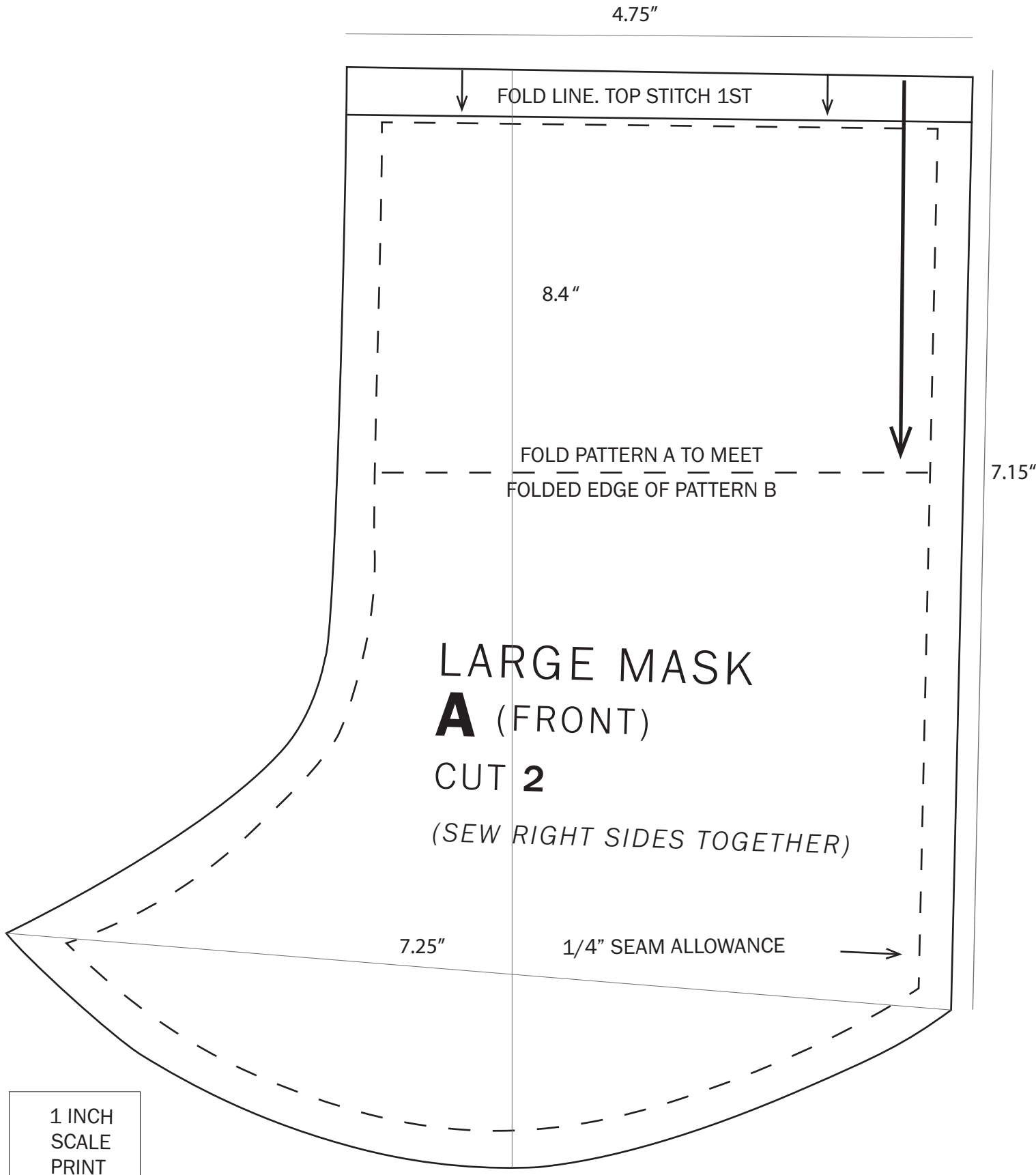
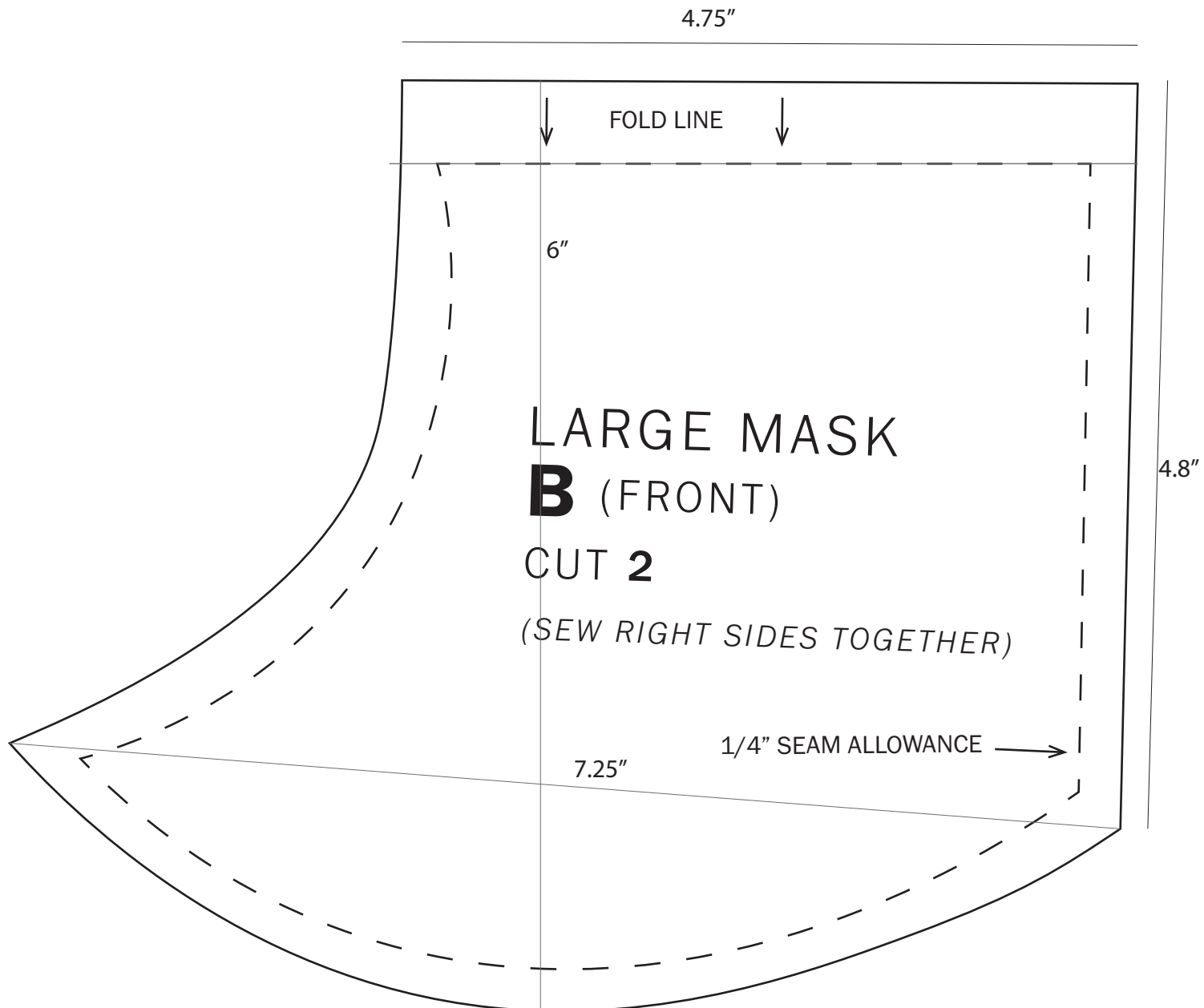
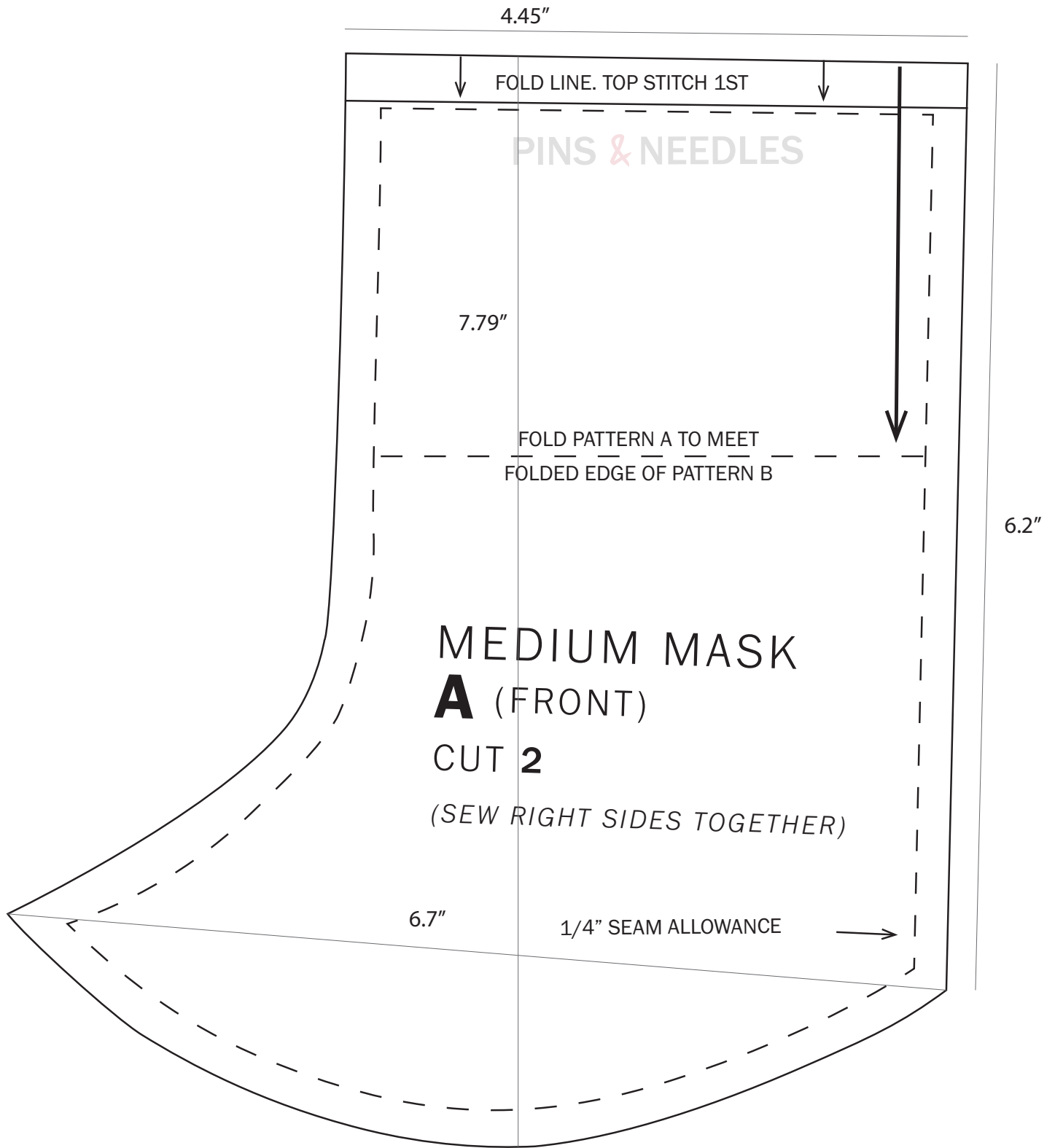


FIG. 2

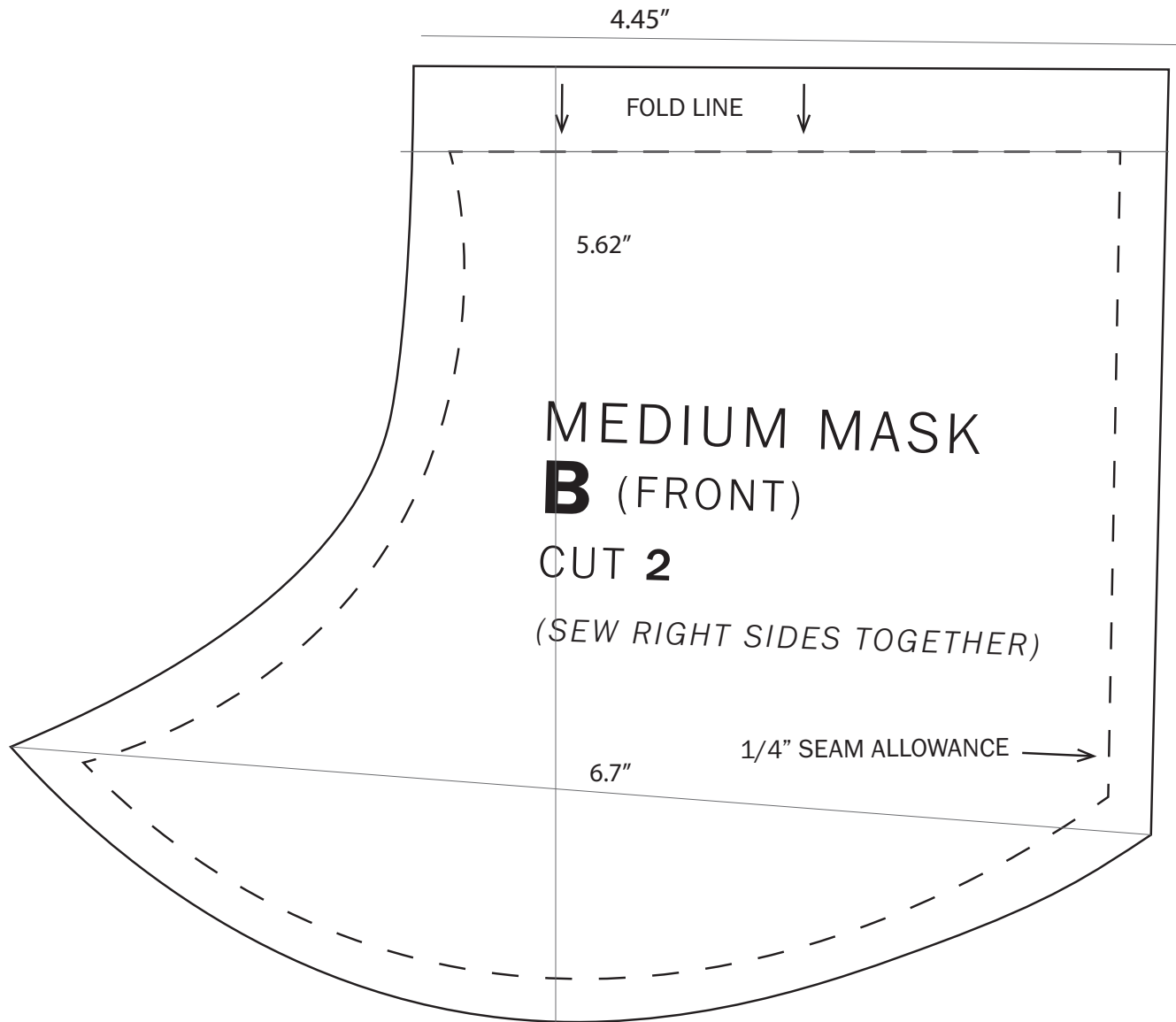


1 INCH  
SCALE  
PRINT  
100%

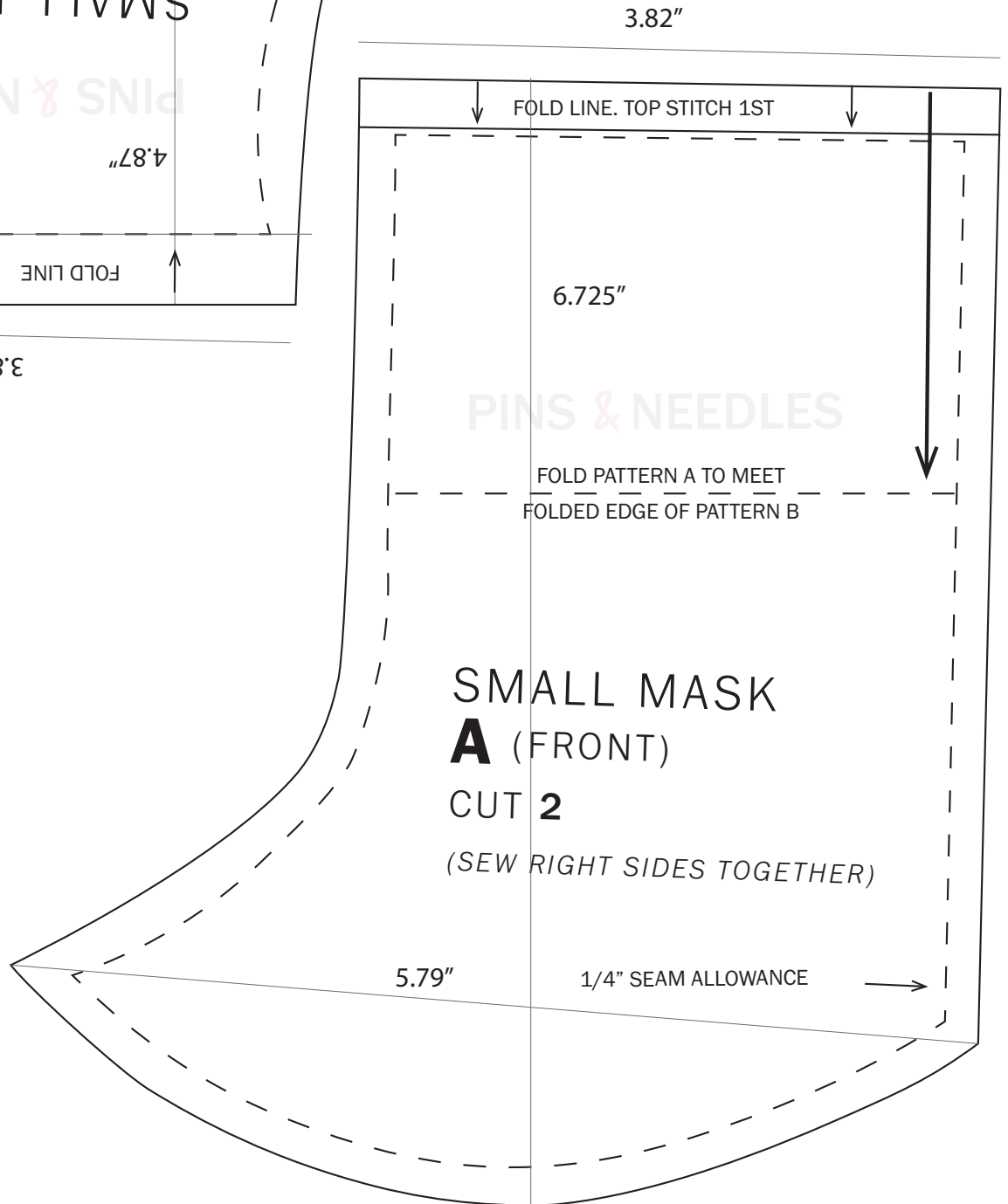
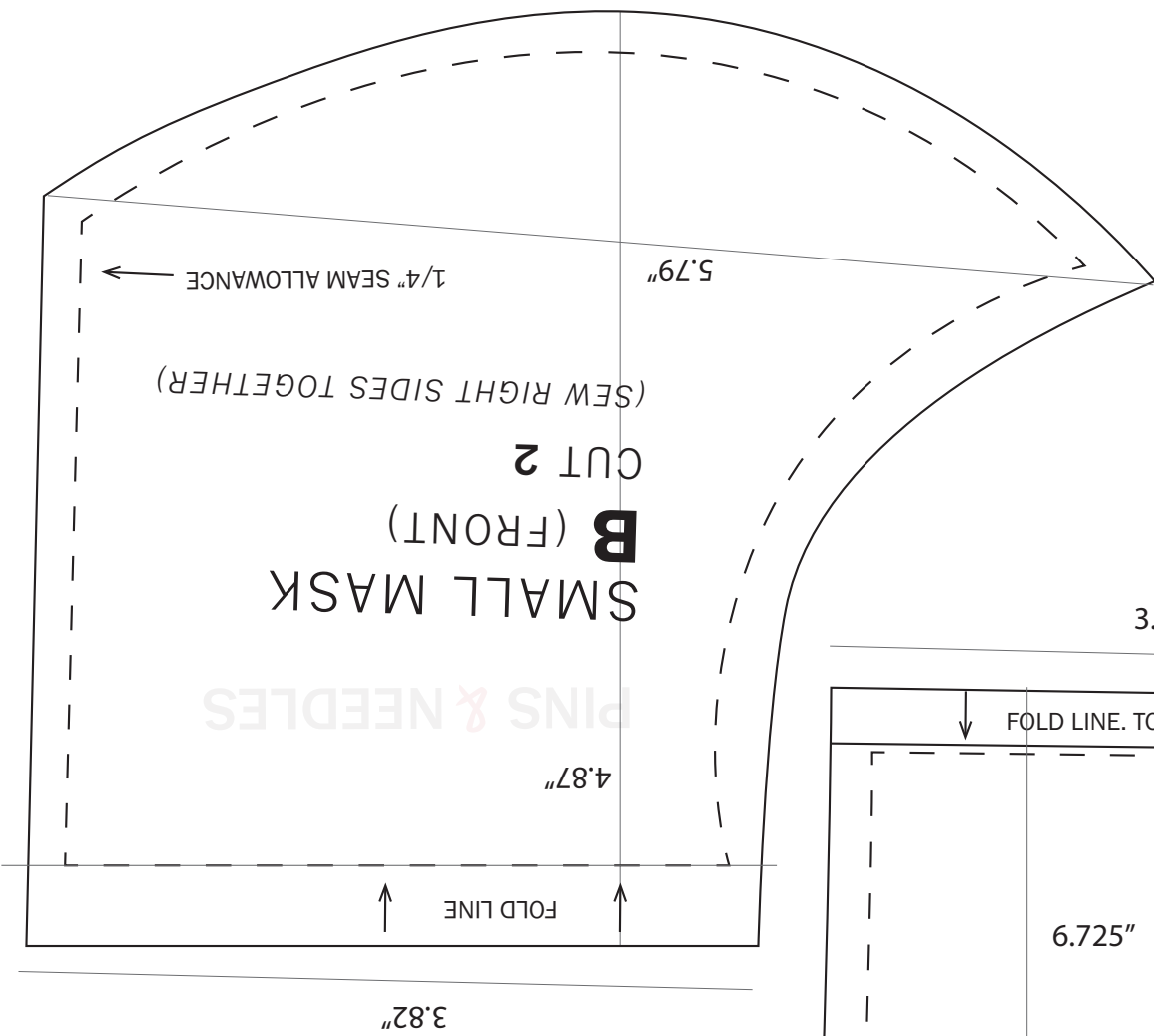




1 INCH  
SCALE  
PRINT  
100%



1 INCH  
SCALE  
PRINT  
100%



1 INCH  
SCALE  
PRINT  
100%